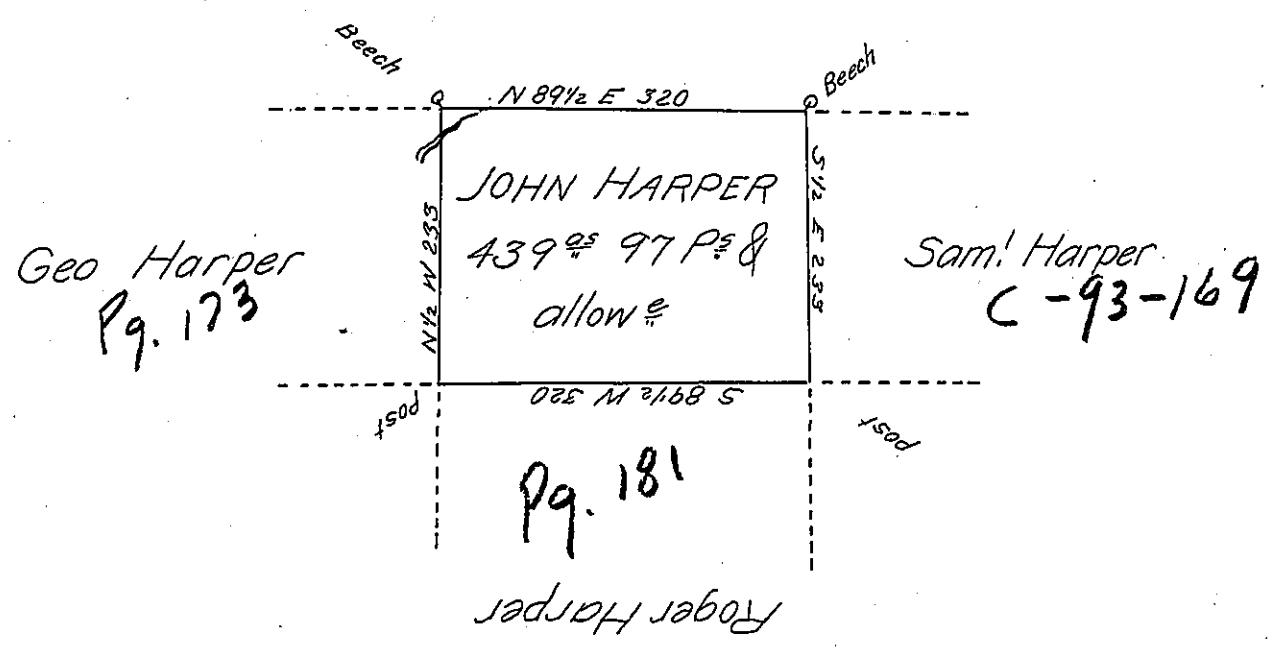


Peter Long



A Draught of a tract of land called \_\_\_\_\_ Situate in the County of Luzerne, Adjoining George Harper & others, surveyed the 16-day of Novem<sup>r</sup>. 1792 for John Harper in pursuance of a warr<sup>t</sup> bearing date the 3<sup>d</sup> day of April 1792 Containing Four hundred thirty nine Acres & ninety seven perches & the usual allowance of Six P<sup>er</sup> Cent for roads &

To Danl Brodhead Esq<sup>r</sup> }  
 Surveyor General

Anty Crothers D.S.

IN TESTIMONY that the above is a copy of the original remaining on file in the Department of Internal Affairs of Pennsylvania, made conformably to an Act of Assembly approved the 16th day of February, 1833, I have hereunto set my Hand and caused the Seal of said Department to be affixed at Harrisburg, this third day of May 1905

*Isaac B. Brown*  
 Secretary of Internal Affairs.